

How to update the Firmware:

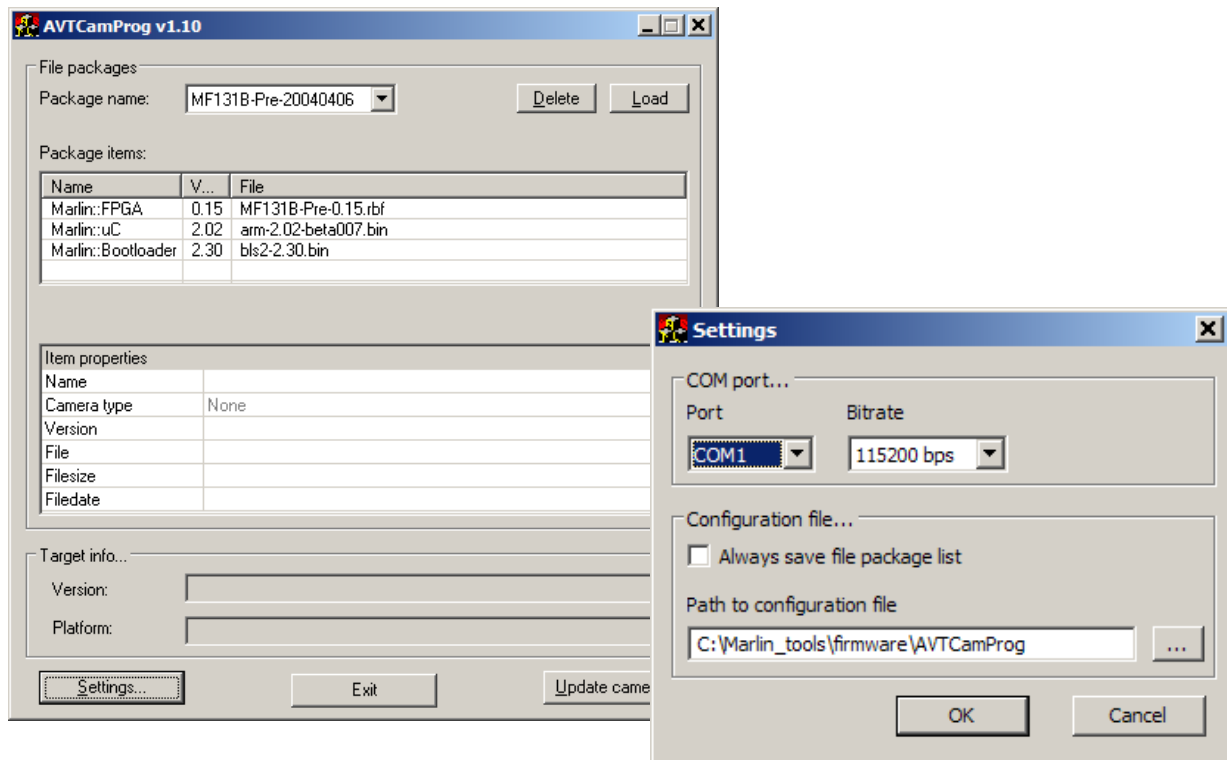
The following items will be needed:

Hardware:

1. A computer with W2000 or XP and a free serial interface
2. The programming cable (AVT#: E1000666)

Software:

1. The programming software AVTCamprog.exe
 2. This user's guide
 3. The programming *.xml file.
1. Start the software AVTCamprog.
 2. First Time: Use the **Settings**- button to set the Com-Port according to your computer and have the Bitrate set fixed to 115200 bps. Enter a path for the configuration file to be stored.
 3. Connect the programming cable to the camera's HiRose connector and the computer's serial port.
 4. Disconnect the camera from power by disconnecting the IEEE-1394 connector.



5. **Load** the xml-file, containing the three different firmware sections, to be programmed into the camera. Its name will then appear in the package name listbox. Package items details the three different firmwares (i.e. FPGA, MikroController and Bootloader) with their respective versions.

General Manager: Frank Grube

Registergericht Gera HRB-Nr. 8962
USt.-ID-Nr. DE 184 383113

Bankverbindungen:

Volksbank Kinzigtal eG, Wolfach
BLZ 664 927 00
Konto-Nr. 458 888 00

Dresdner Bank Jena
BLZ 820 800 00
Konto-Nr. 343 465 500

Ein Unternehmen der
AUGUSTA
Technologie AG

6. Press the **Update** button and reconnect the IEEE-1394 connector within 20 seconds.
This will boot the camera in a mode where it accepts downloading the new firmware. When a new bootloader is required, which is automatically detected by the program, it will be necessary to perform step 6 & 7 **twice**, one time for the bootloader and the second time for the rest of the new firmware.
7. Press **Exit** to bring the camera back to normal mode or disconnect and reconnect the IEEE-1394 connector. The camera's power LED should turn green, no morse code on the two LED's:
You are done!

Camera Compatibility list with IEEE-1394 software, supplied by AVT

This table lists what software version of FirePackage and Direct FirePackage is needed as a prerequisite to work with the cameras.

It is highly recommended to use newer versions than the listed ones, when available.

Mikrocontroller Firmware:	FirePackage	FireView	Direct FirePackage
Current Release: 2.06	>=FirePackage 1V51	>= FireView 1.5	DirectFire Package 040912
Initial Release: 0.90	>=FirePackage 1V41	>= FireView 1.4g	n.a.

General Manager: Frank Grube

Registergericht Gera HRB-Nr. 8962
USt.-ID-Nr. DE 184 383113

Bankverbindungen:

Volksbank Kinzigtal eG, Wolfach
BLZ 664 927 00
Konto-Nr. 458 888 00

Dresdner Bank Jena
BLZ 820 800 00
Konto-Nr. 343 465 500

Ein Unternehmen der

Technologie AG