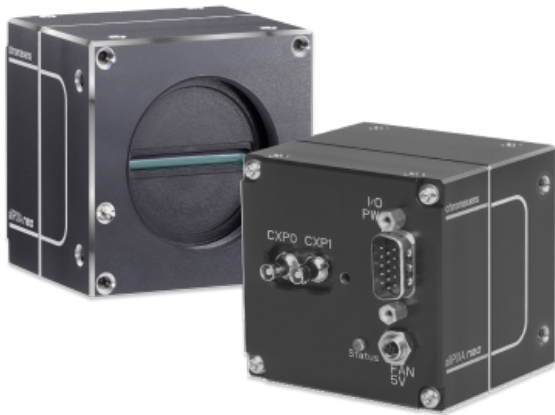


allPIXA neo CXP

allPIXA neo 4k CXP Color



General

Model:	allPIXA neo 4k CXP Color
Product code:	CP000660-04k-44-C1-A1
Product series:	allPIXA neo CXP
Status:	Available

Sensor

Sensor type:	Line scan 2D
Chroma:	Color + Mono
Spectrum:	Visible
Spectral range:	400 nm to 960 nm
Resolution:	4,096 × 4 lines
Sensor architecture (material):	cmos
Pixel size:	7.00 μm × 7.00 μm

Pixel formats

Data format:	3 × 8/10/12 Bit color or 1 × 8/10/12 Bit mono or 4 × 8/10/12 RGB + Mono
--------------	---

Timing and gain

Max. line rate tri-linear:	90 kHz
Max. line rate quad-linear:	80 kHz

I/Os and power

I/O connector:	External I/O (15 pin HD D-Sub, male)
Power supply:	Power over CXP or digital I/O port
Power consumption:	External: 12 W

Mechanical properties

Body dimensions (L x W x H in mm):	62 × 62 × 62
IP class:	IP50
Lens mount(s):	M42 × 1 mm / F-Mount, TFL
Weight:	35000 g

On-board memory and FPGA

Image buffer (RAM):	512 MByte
Non-volatile memory (Flash):	1024 KByte

Interfaces

Digital interface:	2 x cxp-12 micro-bnc
Interface connector:	Micro-BNC
Vision standard:	CoaxPress

FW features - image control

Exposure modes:	manual
Gain modes:	auto, manuel
White balance modes:	auto, manual

Quantum Efficiency

