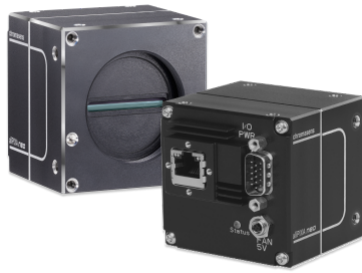


allPIXA neo 10GigE

allPIXA neo 6k 10GigE

Color-NIR



General

Model	allPIXA neo 6k 10GigE Color-NIR
Product code	CP000660-06K-77-C2-A1
Product series	allPIXA neo 10GigE
Status	Available

Sensor

Sensor type	Line scan 2D
Chroma	Color + Nir
Spectrum	Visible-NIR
Spectral range	400 nm to 960 nm
Resolution	6,144 × 4 lines
Sensor architecture (material)	cmos
Pixel size	5.00 μm × 5.00 μm

Pixel formats

Data format	3 × 8/10/12 Bit color or 1 × 8/10/12 Bit mono or 4 × 8/10/12 RGB + NIR
-------------	--

Timing and gain

Max. line rate tri-linear	60 kHz
Max. line rate quad-linear	45 kHz

I/Os and power

I/O connector	External I/O (15 pin HD D-Sub, male)
Power supply	PoE or digital I/O port
Power consumption	External: 12 W

Mechanical properties

Body dimensions (L x W x H in mm)	62 × 62 × 62
IP class	IP50
Lens mount(s)	M42 × 1 mm / F-Mount, TFL
Weight	350 g

On-board memory and FPGA

Image buffer (RAM)	512 MByte
Non-volatile memory (Flash)	1024 KByte

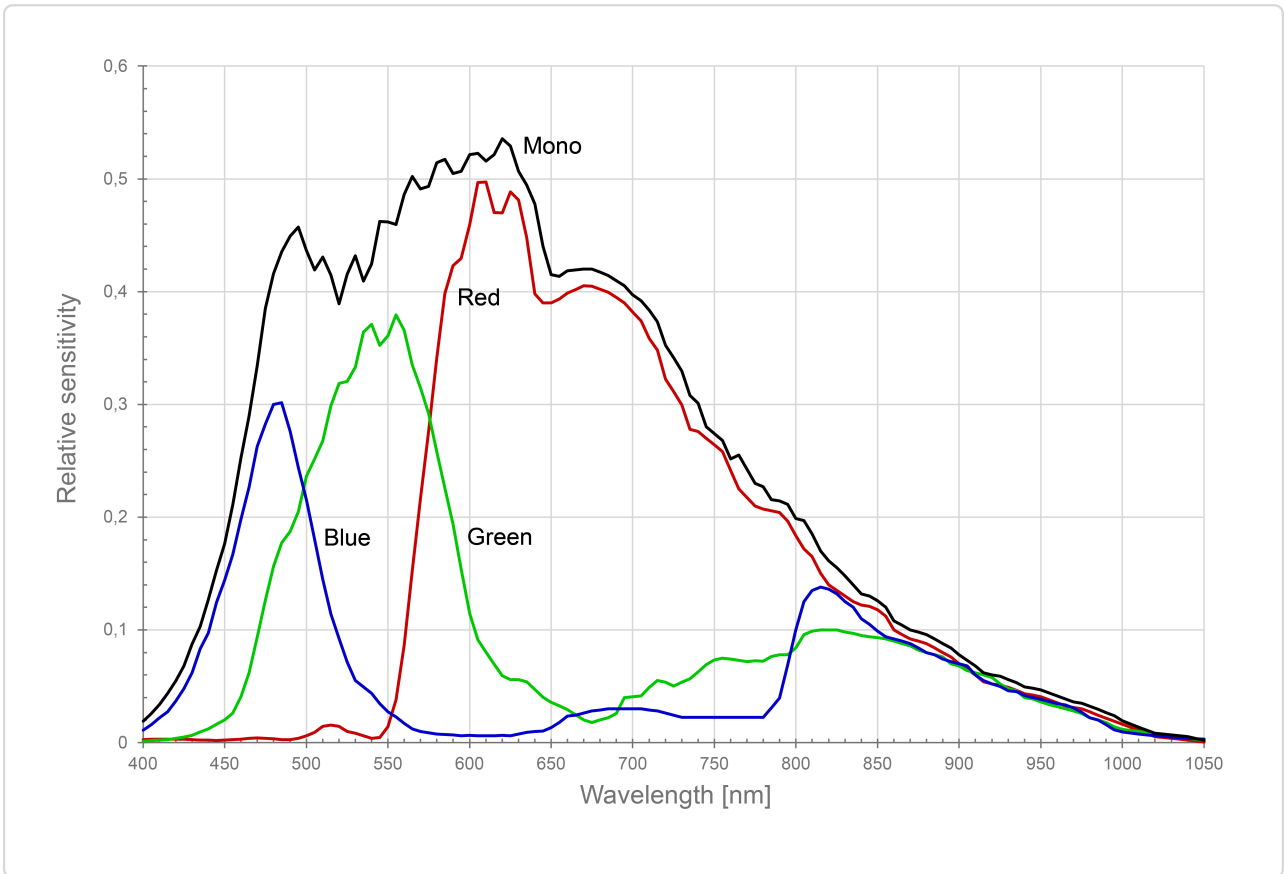
Interfaces

Digital interface	single 10 gige
Interface connector	RJ45 (10GBase-T)
Vision standard	GigE Vision 2.0 compliant

FW features - image control

Exposure modes	manual
Gain modes	auto, manual
White balance modes	auto, manual

Quantum Efficiency



Technical Drawing

