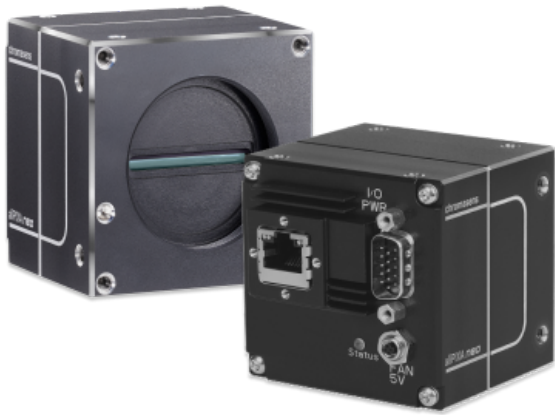


# allPIXA neo 10GigE

allPIXA neo 6k 10GigE Color



## General

Model:	allPIXA neo 6k 10GigE Color
Product code:	CP000660-06K-77-C1-A1
Product series:	allPIXA neo 10GigE
Status:	Available

## Sensor

Sensor type:	Line scan 2D
Chroma:	Color + Mono
Spectrum:	Visible
Spectral range:	400 nm to 960 nm
Resolution:	6,144 × 4 lines
Sensor architecture (material):	cmos
Pixel size:	5.00 μm × 5.00 μm

## Pixel formats

Data format:	3 × 8/10/12 Bit color or 1 × 8/10/12 Bit mono or 4 × 8/10/12 RGB + Mono
--------------	---

## Timing and gain

Max. line rate tri-linear:	60 kHz
Max. line rate quad-linear:	45 kHz

## I/Os and power

I/O connector:	External I/O (15 pin HD D-Sub, male)
Power supply:	PoE or digital I/O port
Power consumption:	External: 12 W

## Mechanical properties

Body dimensions (L x W x H in mm):	62 × 62 × 62
IP class:	IP50
Lens mount(s):	M42 × 1 mm / F-Mount, TFL
Weight:	350 g

## On-board memory and FPGA

Image buffer (RAM):	512 MByte
Non-volatile memory (Flash):	1024 KByte

## Interfaces

Digital interface:	single 10 gige
Interface connector:	RJ45 (10GBase-T)
Vision standard:	GigE Vision 2.0 compliant

## FW features - image control

Exposure modes:	manual
Gain modes:	auto, manual
White balance modes:	auto, manual

# Quantum Efficiency

