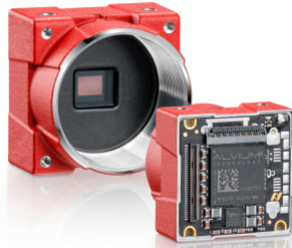


Alvium 1800 C

Alvium 1800 C-508



Alvium 1800 C-508 innovative MIPI CSI-2 camera with Sony IMX250 CMOS global shutter sensor provides industrial performance for cost effective embedded applications.

General

Model	Alvium 1800 C-508
Product series	Alvium 1800 C
Status	Available

Sensor

Sensor type	Area scan
Chroma	Mono or Color
Spectrum	Visible
Spectral range	300 nm to 1100 nm
Resolution	2,464 × 2,056 (5.10 MP)
Sensor model	Sony IMX250
Shutter type(s)	Global Shutter
Sensor size	12.75 mm ø (Type 2/3)
Pixel size	3.45 µm × 3.45 µm

Pixel formats

Monochrome pixel formats	GREY, RAW10, RAW12, RAW8, Y10, Y12
YUV pixel formats	UYVY, YCbCr411_8_CbYYCrYY, YCbCr422_8_CbYCrY, YCbCr8_CbYCr, YUV422 8-bit
RGB pixel formats	BGR8, RGB3, RGB8 (default), RGB888 (default)
Bayer pixel formats	BayerGR10, BayerGR10p, BayerGR12, BayerGR12p, BayerGR8

Imaging performance

Quantum efficiency @ 529 nm	64 %
-----------------------------	------

Timing and gain

Max. frame rate	95 fps
Exposure time	19 μ s to 10 s
Gain	0.0 dB to 48.0 dB

I/Os and power

Non-isolated lines	2 programmable GPIOs
Power supply	5 VDC over MIPI CSI-2
Power consumption	Typical: 2.8 W

Operating conditions

Operating temperature (housing)	-20 °C to 65 °C ((housing))
---------------------------------	-----------------------------

Mechanical properties

Body dimensions (L x W x H in mm)	26 x 29 x 29
Lens mount(s)	C-Mount, CS-Mount
Weight	40 g

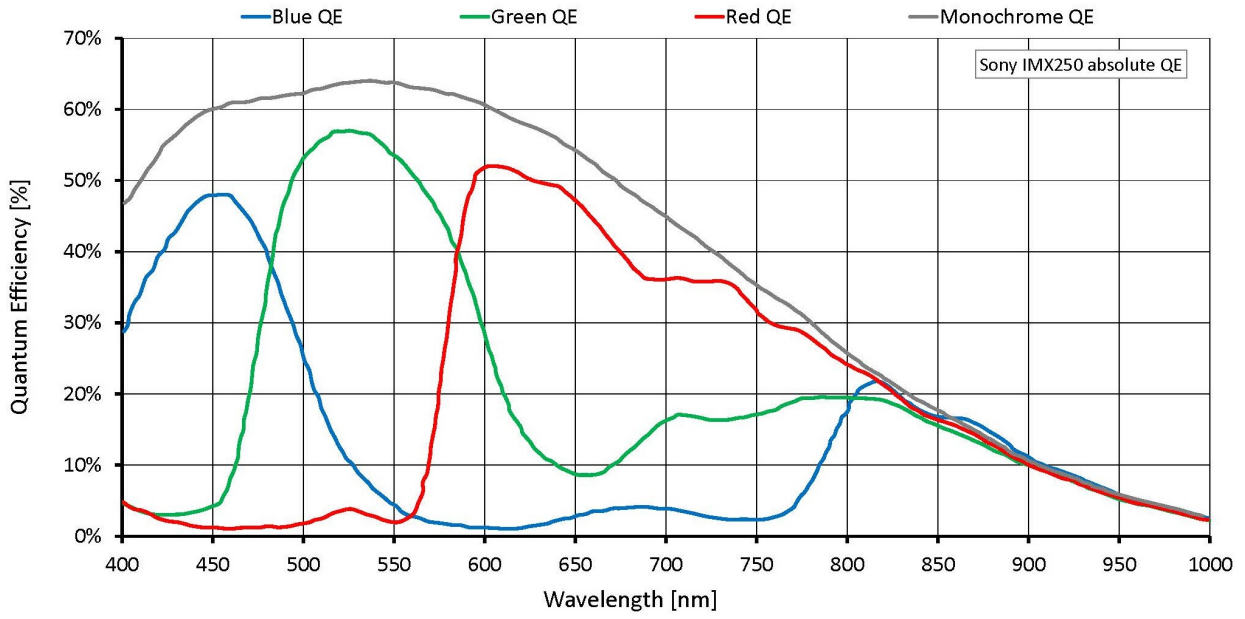
On-board memory and FPGA

Image buffer (RAM)	256 KByte
Non-volatile memory (Flash)	1024 KByte

Interfaces

Digital interface	MIPI CSI-2, up to 4 lanes
-------------------	---------------------------

Quantum Efficiency



Technical Drawing

