

HR 10GigE

hr387MXGE



常规

型号:	hr387MXGE
产品代码:	F004075
产品系列:	HR 10GigE
状态:	Available

传感器

传感器类型:	Area scan
色度:	Mono
光谱:	Visible
光谱范围:	400 nm to 1000 nm
分辨率:	5,440 × 3,076 (16.70 MP)
传感器型号:	Sony IMX387LLA
传感器架构 (材料) :	cmos
快门类型:	global-shutter
传感器尺寸:	18.77 × 10.61 mm (21.56 mm, 21.7mm (Type 4/3))
像素尺寸:	3.45 μm × 3.45 μm

像素格式

传感器位深度:	8-Bit,12-Bit
单色像素格式:	mono8, mono12

时序与增益

最大帧率:	56.4
曝光时间:	21 μ s to 60 s
增益:	0.0 dB to 48.0 dB

I/O与电源

非电气隔离IO:	0 x LVDS input, 0 x LVDS output, 0 x TTL input, 0 x TTL output, 2 x 24V input, 4 x Open drain output,
特定非电气隔离IO:	1 x RS232 input, 1 x RS232 output, 0 x RS422 input, 0 x RS422 output,
光电隔离线路:	1 x Optical isolated input, 0 x Optical isolated input,
电源供应:	10 to 25VDC, Power over Ethernet (POE+, in option -P)
功耗:	External: 15.5 W (typical)

机械特性

机身尺寸 (L x W x H mm) :	80 x 70 x 70
滤光片/保护玻璃:	N-BK7 - AR coating 380-850nm
IP防护等级:	IP30
镜头接口:	M58x0.75
重量:	400 g

板载内存与FPGA

图像缓存 (RAM) :	448 MByte
非易失性存储器 (闪存) :	32 MByte

接口

数字接口:	10gige
接口连接器:	(RJ-45)

固件功能 - 图像控制

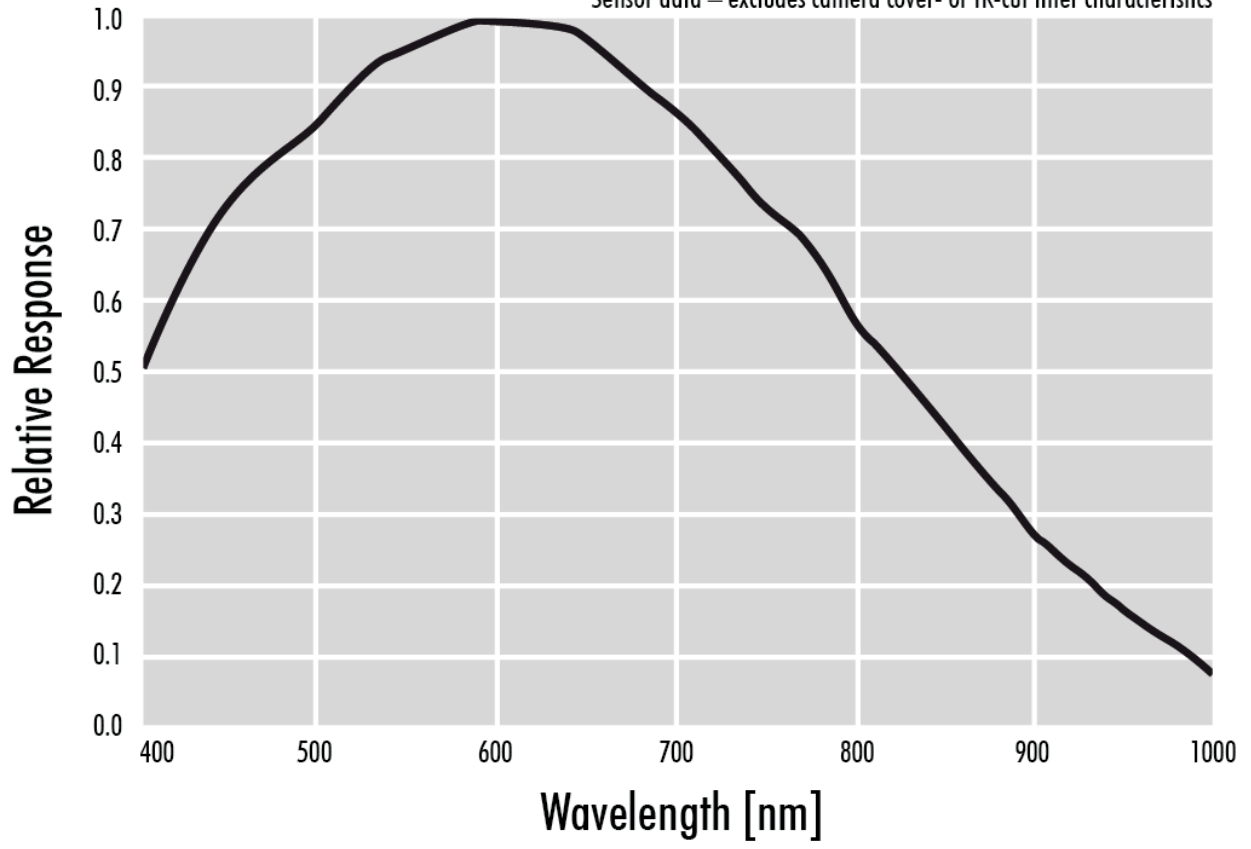
曝光模式:	Manual, Auto, External
增益模式:	Auto, Manual
图像控制功能:	FW Features - Image Control

固件功能 - 相机控制

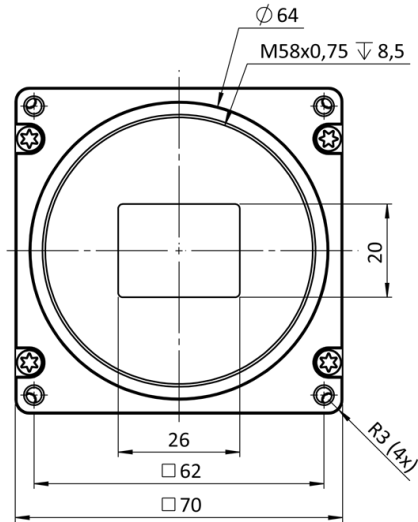
触发模式/同步:	INTERNAL, SOFTWARE, EXTERNAL
相机控制功能:	User Sets, POE, PWM(4), Sequencer,

Monochrome

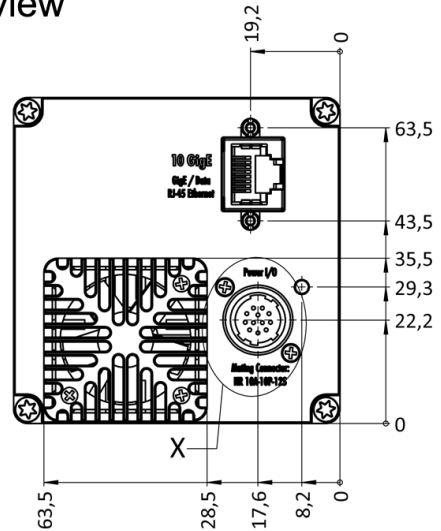
Sensor data – excludes camera cover- or IR-cut filter characteristics



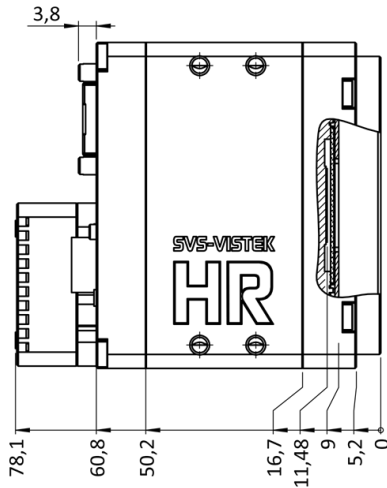
front view



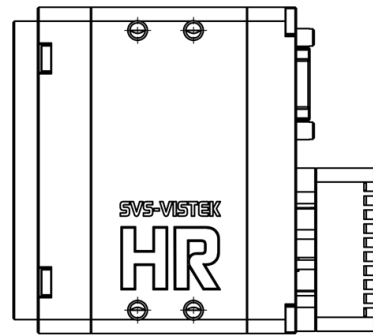
back view



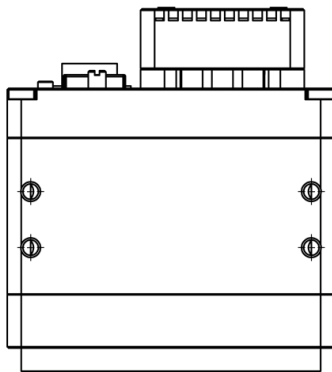
cross section



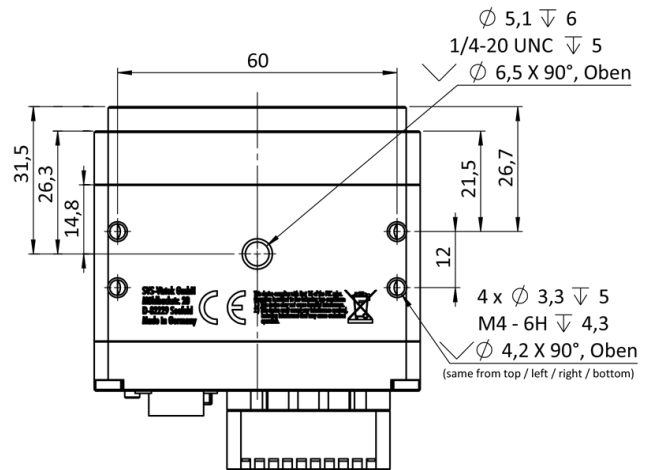
right view



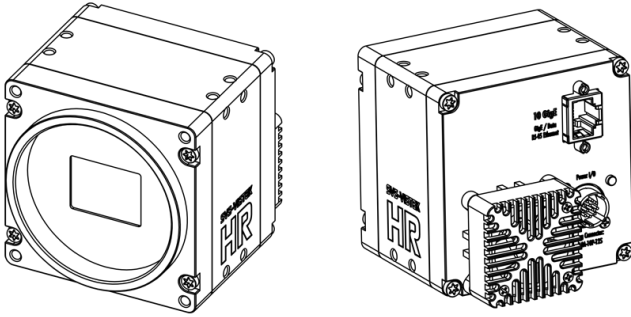
top view



bottom view



3D view



I/O pin assignment



1	VIN - (GND)	7	OUT 1 (open drain)
2	VIN + (10 V to 25 V DC)	8	OUT 2 (open drain)
3	IN 4 (RXD RS232)	9	IN 3 + (opto In +)
4	OUT 4 (TXD RS232)	10	IN 3 - (opto In -)
5	IN 1 (0-24V)	11	OUT 3 (open drain)
6	IN 2 (0-24V)	12	OUT 0 (open drain)