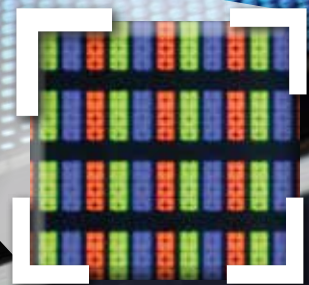


MAXIMUM RESOLUTION

shr811
245
MP

12.4 fps @ 12 bit **CXP-12**



CXP-12
P-CXP
Power over CoaXPress

Inspect with 245 MP!

The SHR series combines large pixel structures with the highest resolutions. The physical characteristics of large pixels guarantee outstanding image quality. High-quality harmonization of the pixels with defect pixel correction provides a noise-free image. The camera offers the highest structural precision in sensor adjustment in a massive, thermally highly optimized housing. The large M72 lens mount can be adapted to any lens. This makes the SHR811 the cameras for the most demanding optical tasks.

The high-performance CoaXPress interface enables the fastest high-speed data transfer with excellent latency behavior. The camera is equipped with a comprehensive I/O interface with galvanic interface separation, sequencer and integrated multichannel LED light control.

The fan can be fully deactivated via software and features a hermetic seal that isolates airflow from internal components, ensuring compatibility with critical cleanroom environments. Optional heatsinks help keep your camera in optimal operating conditions.

Technical Highlights

- Outstanding image quality
- High dynamic range
- Excellent harmonization of the pixels
- CMOS sensors with rolling shutter
- User-defined lens shading correction
- Signal security through Schmitt trigger, debouncer
- Industrial I/O concept: up to 24 V signal voltage, RS232, galvanically isolated input
- Integrated multichannel LED strobe controller
- Sequencer - up to 16 intervals
- GenICam interface
- Ideal for cleanrooms
- Can be operated with Dual and Quad CoaXPress-12
- Power over CoaXPress

The SHR is ideal for inspecting larger areas, in the CoaXPress version also with long data lines. Ideal for wafer, solar panel and display inspection applications.

Model

shr811

Interface	CoaXPress
Resolution [pix]	19,200 x 12,800
Framerate [fps]	12.4
[MP]	245.8

Specifications Sensor

Sensor	IMX 811 (monochrome / bayer)
Manufacturer	Sony
Sensor Type	Area CMOS
Shutter Type	Rolling Shutter
Chroma	mono or color
Optical Diagonal [mm]	64.84
Sensor Format	Type 4.1
Pixel size (h x v) [μm]	2.81 x 2.81

Specifications Camera

Exposure Modes	Manual, Auto
Trigger Modes	Internal, Software, External
Exposure Time min. [μs]	60
Exposure Time max. [sec]	60 (external ∞)
Pixel Format [bit]	mono 12, 14, 16/ color 16
Internal Memory SDRAM / Flash [MB]	1024 / 160

Feature Set

White Balance (color)	auto / manual
AOI	yes
LUT	yes
Offset	yes
Binning	yes
Image Flip	yes
Shading Correction	yes (external)
Defect Pixel Correction	yes
Sequencer	yes
PoCXP	yes

Specifications Housing

Lens mount	M72 x 0.75
Dimensions (w x h x d) [mm]	80 x 80 x 85.6
Protection Class	IP30
Weight [g]	600
Operating temperature (housing)	-10 to 60 °C

Digital I/O Interfaces

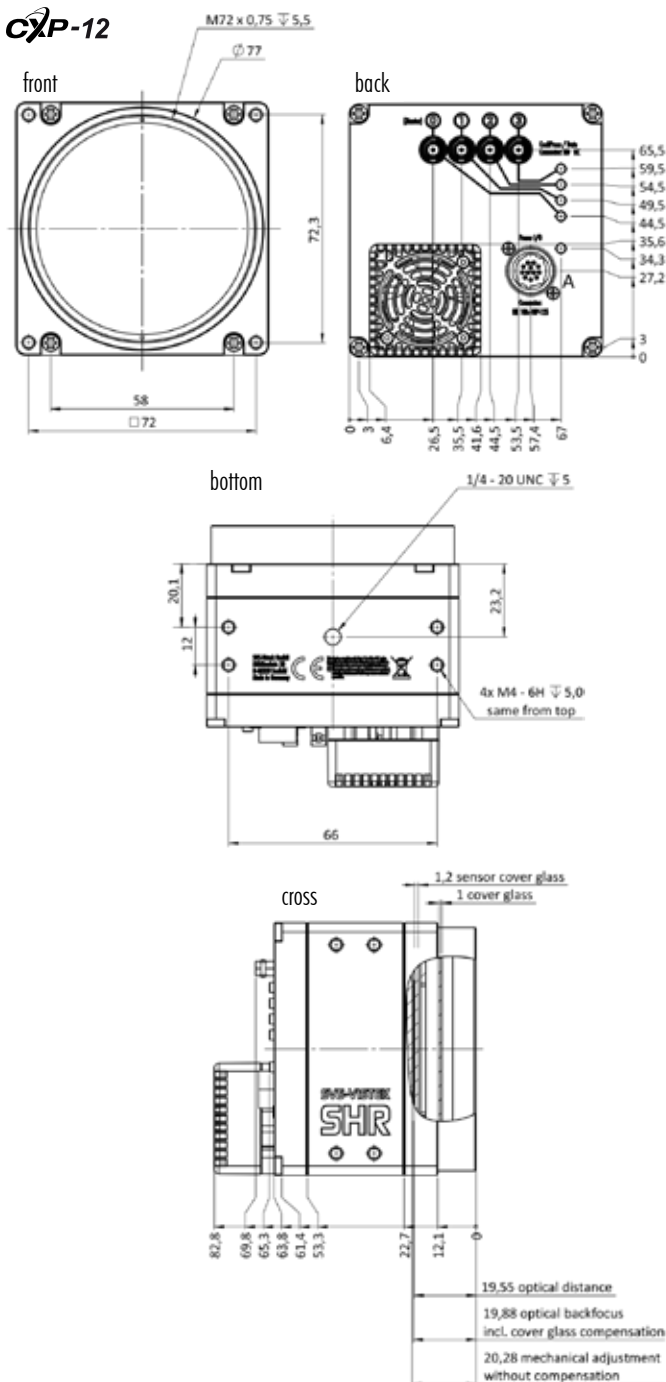
Input 24 V	2 x
Input OPTO	1 x
Output Open Drain	4 x
I/O RS-232	1 x
Power Supply	10 – 25 V (DC)
Power Consumption	17 W (dep. on operating mode)

Order Code

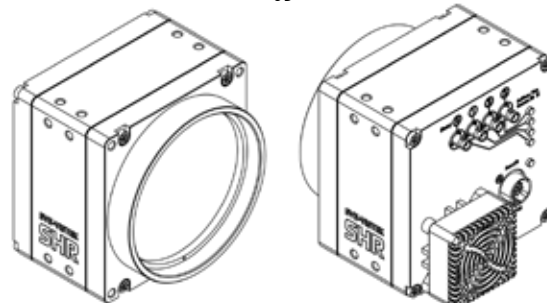
color	shr811CCX12
mono	shr811MCX12

Dimensions [mm]

CXP-12

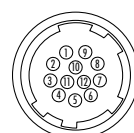


3D



Pinout

Power I/O



- | | |
|-----------------------|----------------------|
| 1 V In- (Gnd) | 7 Out1 (open drain) |
| 2 V In+ (10 – 25V DC) | 8 Out2 (open drain) |
| 3 In 4 (RXD RS232) | 9 In3+ (opto In +) |
| 4 Out 4 (TXD RS232) | 10 In3- (opto In -) |
| 5 In1 (0 – 24V) | 11 Out3 (open drain) |
| 6 In2 (0 – 24V) | 12 Out0 (open drain) |

Germany
SVS-Vistek GmbH
 Ferdinand-Porsche-Str. 3
 82205 Gilching
 GERMANY
 Tel. +49 8105 3987-60
 Fax +49 8105 3987-699
 info@svs-vistek.com
 www.svs-vistek.com

Japan
SVS-Vistek K.K.
 Yokohama Portside Bldg. 10F
 8-1 Sakae-cho, Kanagawa-ku,
 Yokohama-shi, Kanagawa, 221-0052
 JAPAN
 Tel. +81 45 577 9527
 TKV-Japan@tkhvision.com
 www.svs-vistek.com

USA
SVS-Vistek Inc.
 4400 State Hwy 121,
 Suite 300
 Lewisville, TX 75056
 USA
 Tel. +1 800 935 6593
 info-usa@svs-vistek.com
 www.svs-vistek.com