

Preliminary

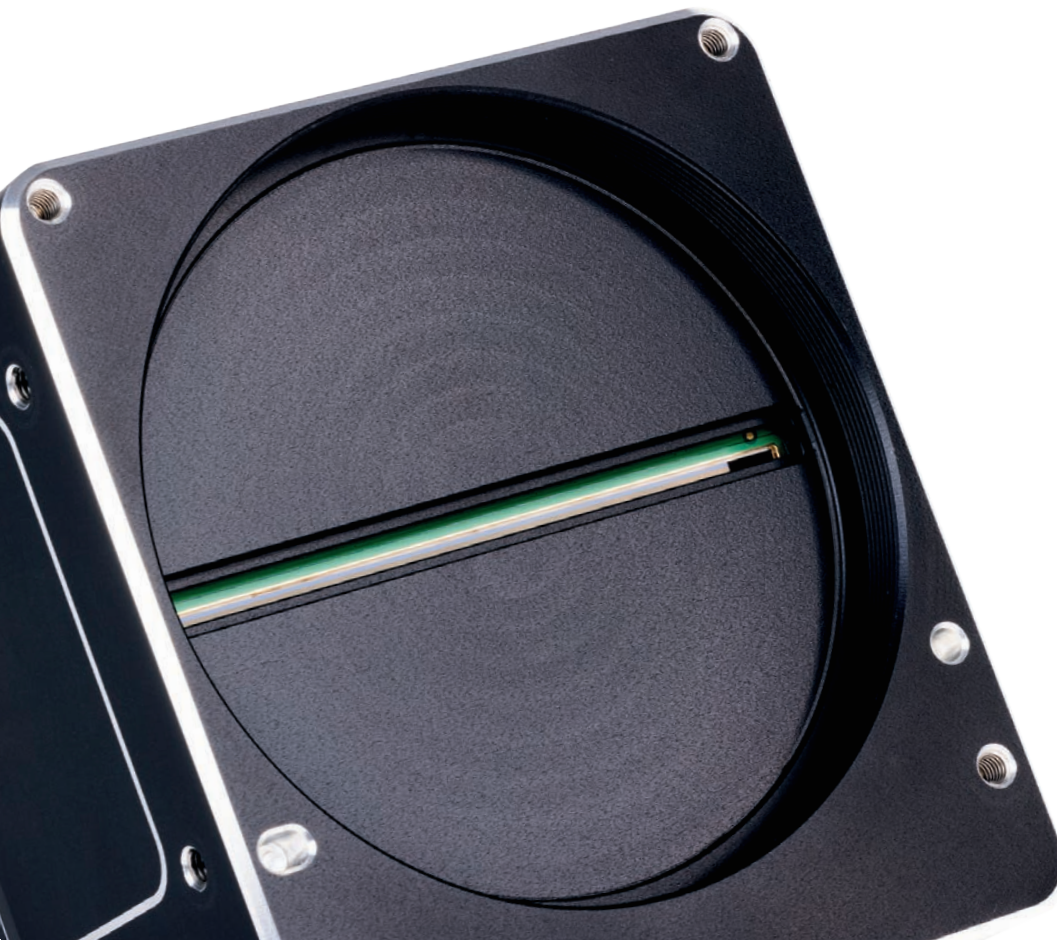


allPIXA *evo*

**HIGH PERFORMANCE
LINE SCAN CAMERA SERIES**



**HIGH RESOLUTION
FAST INTERFACES**



32k



allPIXA evo 32k

Line Scan Camera with 4x CoaXPress



CoaXPress® CXP-12 GEN*i*CAM

The allPIXA evo 32k line scan camera offers exceptional resolution and speed through combination of high-end CMOS sensors, embedded image processing algorithms and latest machine vision interface technologies. The innovative system design features two 16k/5 μm lines with a $\frac{1}{2}$ pixel offset that are captured and processed in real time using state-of-the-art algorithms to generate an outstanding 32k image using standard 16k lenses. Therefore, the camera is perfectly suitable for applications such as semiconductor inspection, PCB inspection, AOI and quality control where sub-pixel defect detection is critical.

CAMERA OVERVIEW:

- ▶ CMOS multi-line sensor with 32768 pixels
- ▶ Sensor pixel size: 5 μm
- ▶ Interfaces: 4x CoaXPress CXP-12 (HD-BNC)
- ▶ Supports PoCXP (Power over CoaXPress)
- ▶ High speed: up to 73 kHz in Mono
- ▶ Output of 32768 pixels Mono
- ▶ Optical mount: M95

FEATURES:

- ▶ Frame and line trigger options including variable encoder input
- ▶ DSNU and PRNU correction
- ▶ Continuous and automatic white balancing
- ▶ Precise multi-camera synchronization
- ▶ SDK and graphical tool for Windows and Linux
- ▶ Fully GenICam and GigE Vision compliant

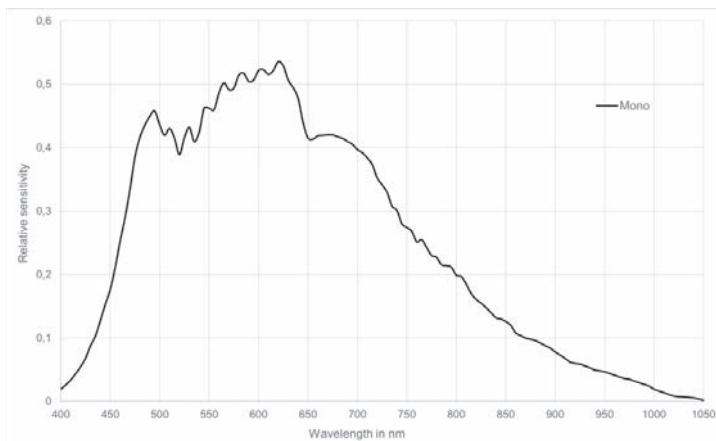
TYPICAL APPLICATIONS:

- AOI / PCB Inspection
- Wafer inspection
- High speed web & foil inspection
- Battery electrode foil inspection
- Flat panel inspection

SPECIFICATIONS

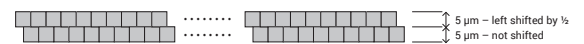
	allPIXA evo 32k
Interface	CoaXPress [®]
Sensor	CMOS
Number of pixels	32768
Active pixel size	5 µm x 5 µm
Interface connector	4x CXP-12
Max. line rate Mono: 32768 x 1 (8 Bit)	73 kHz
Power over CXP	PoCXP
Power supply	12-24V DC ± 10% Hirose
Trigger mode	Free run / Line trigger / Frame trigger
Operating temperature	0° to 60° housing temperature
Dimensions	102 x 113 x 100 mm
Lens mount	M95 x 1
Weight	1.100 g
Certifications	CE; RoHS; REACH

SPECTRAL SENSITIVITY (MONO)



SENSOR LINES

Shifted mono lines
for higher resolution



DRAWINGS

allPIXA evo 32k CoaXPress

