

**Application Note:**

# **PvAPI: Saving and Loading Camera Attributes with a Text File**

## Prerequisites

The following items are required:

- Computer with Windows 7, Vista, XP, Linux, QNX, or Mac OS X operating system
- Allied Vision GigE camera
- GigE network card and GigE cable

www

See Allied Vision hardware selection for GigE cameras:



[http://www.alliedvision.com/fileadmin/content/documents/products/cameras/various/appnote/Hardware\\_Selection\\_for\\_Allied\\_Vision\\_GigE\\_Cameras.pdf](http://www.alliedvision.com/fileadmin/content/documents/products/cameras/various/appnote/Hardware_Selection_for_Allied_Vision_GigE_Cameras.pdf)

- Allied Vision PvAPI SDK

www

See legacy software downloads for PvAPI SDK download:



<http://www.alliedvision.com/en/support/software-downloads.html>

- Visual Studio C++ or an equivalent integrated development environment (IDE)

## Instructions

1. Open the **CamSetup** folder in the GigESDK **examples** directory. This folder contains the source code for the CamSetup utility.

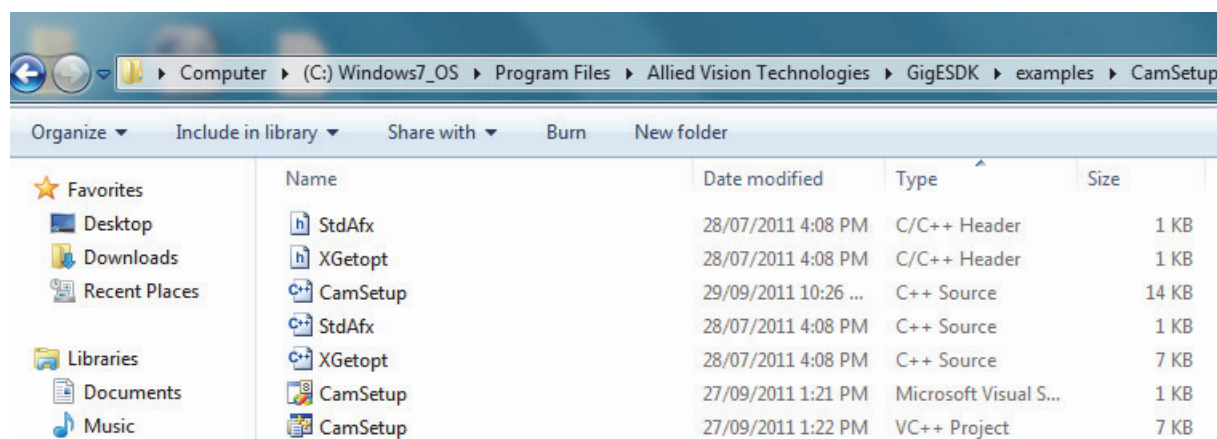


Figure 1: Source code files in **CamSetup** folder

2. Microsoft Visual C++ users: open the VC++ project file—**CamSetup.vcproj**. Alternative IDE users create a project using the **CamSetup.cpp**, **PvAPI.h**, and other required header files (see `#include` statements in **CamSetup.cpp**).

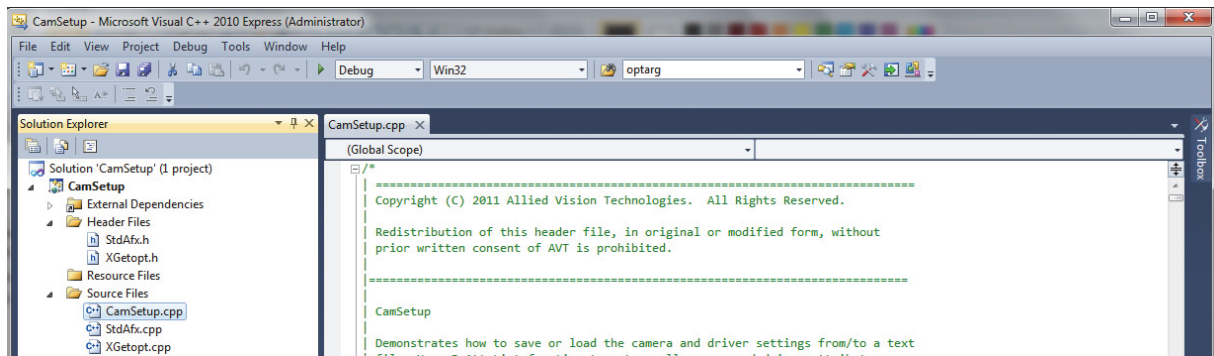


Figure 2: CamSetup utility source code opened in Microsoft Visual C++

3. Compile the source code for the CamSetup utility to generate an application file.

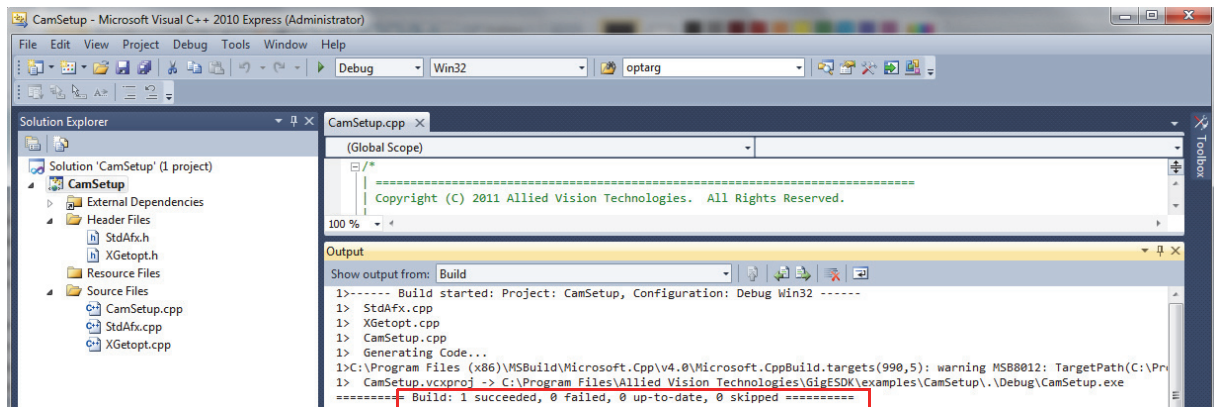


Figure 3: Result of successful compilation of Camsetup source code

4. Locate the generated application file—**CamSetup.exe** in GigESDK **bin-pc** directory.

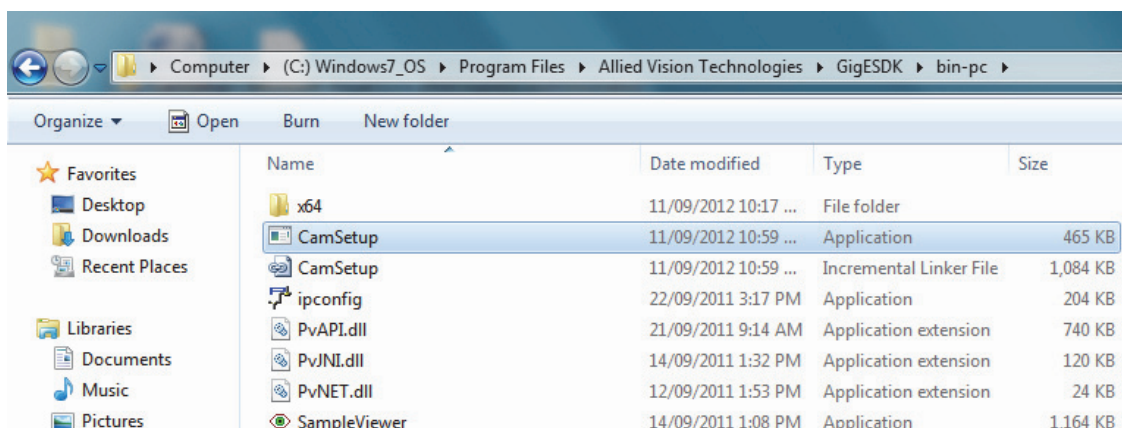


Figure 4: Generated CamSetup application file in the **bin-pc** directory

5. Connect your Allied Vision GigE camera to the computer.

**www**



For more information, see the GigE Installation Manual:

[http://www.alliedvision.com/fileadmin/content/documents/products/cameras/various/installation-manual/GigE\\_Installation\\_Manual.pdf](http://www.alliedvision.com/fileadmin/content/documents/products/cameras/various/installation-manual/GigE_Installation_Manual.pdf)

6. Launch DOS prompt and access the **bin-pc** directory.

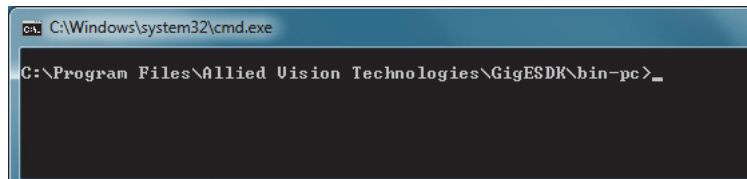


Figure 5: Working directory in DOS prompt

7. Determine camera IP by executing **IPConfig.exe** in **bin-pc** directory.

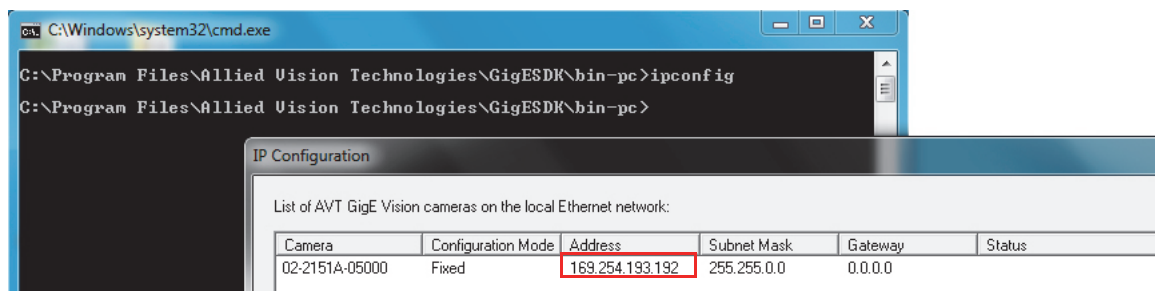


Figure 6: IP configuration of the GigE camera

8. Use the following commands to save/load the camera parameters to/from a text file :

- For saving camera attributes to a text file, enter:

`CamSetup -i <CAMERA IP ADDRESS> -s <FILENAME.TXT>`

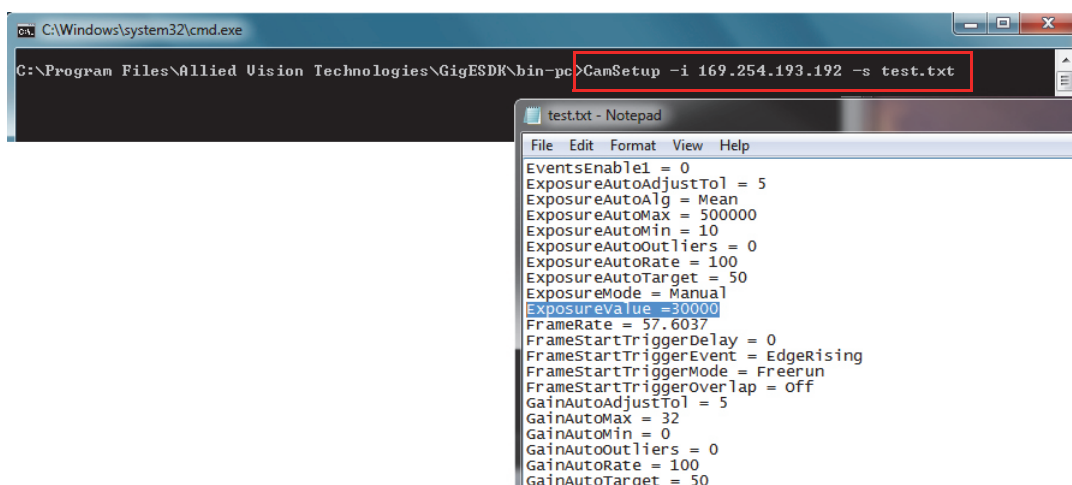
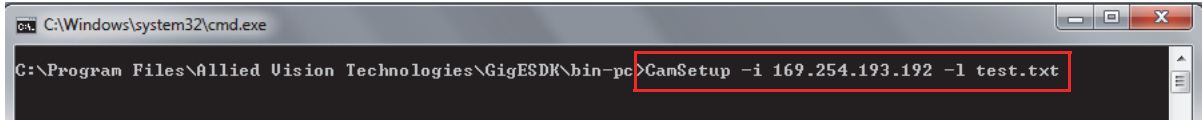


Figure 7: Camera attributes saved in **test.txt** file

- For loading camera attributes from a text file, enter:

```
CamSetup -i <CAMERA IP ADDRESS> -l <FILENAME.TXT>
```



```
C:\Windows\system32\cmd.exe
C:\Program Files\Allied Vision Technologies\GigESDK\bin-pc>CamSetup -i 169.254.193.192 -l test.txt
```

Figure 8: Command to load camera attributes from **test.txt** file

**Note**

The text file is saved to / loaded from the same directory as **Camsetup.exe**.



For technical support, please contact [support@alliedvision.com](mailto:support@alliedvision.com).

For comments or suggestions regarding this document, please contact [info@alliedvision.com](mailto:info@alliedvision.com).

## Disclaimer

Due to continual product development, technical specifications may be subject to change without notice. All trademarks are acknowledged as property of their respective owners. We are convinced that this information is correct. We acknowledge that it may not be comprehensive. Nevertheless, Allied Vision cannot be held responsible for any damage in equipment or subsequent loss of data or whatsoever in consequence of this document.

Copyright © 2013

This document was prepared by the staff of Allied Vision Technologies Canada (“Allied Vision”) and is the property of Allied Vision, which also owns the copyright therein. All rights conferred by the law of copyright and by virtue of international copyright conventions are reserved to Allied Vision. This document must not be copied, or reproduced in any material form, either wholly or in part, and its contents and any method or technique available there from must not be disclosed to any other person whatsoever without the prior written consent of Allied Vision.